



Olson Mask

Made by: Clayton Skousen & Rose Hedges

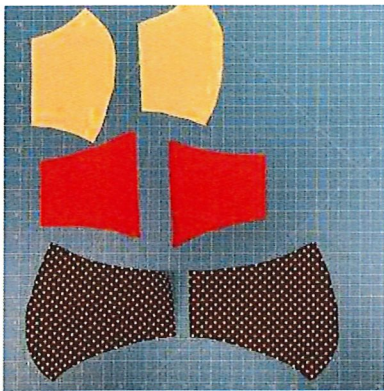
Materials Needed



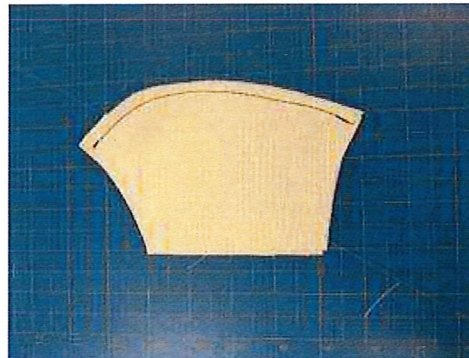
- Tightly woven poly-cotton blend fabric should be used
- All-Purpose Thread
- Four 16" strips of bias tape securely sewn at each corner OR elastic hair ties (aka pony-tail holders) (Step 10)
- Scissors

Instructions

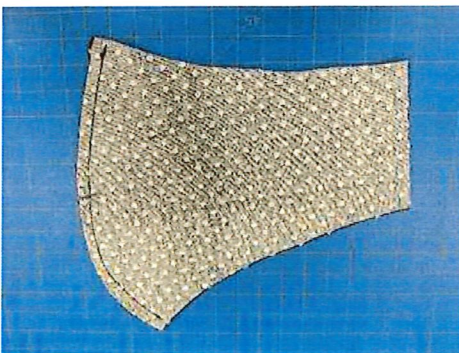
1 Using the patterns, cut one of each shape. You will need six (6) total pieces.



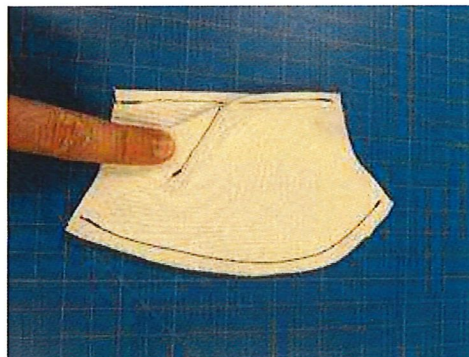
3 Sew *mouth 1* and *mouth 2* together along *side 3*.



2 Sew *face 1* and *face 2* together along *side 3*.

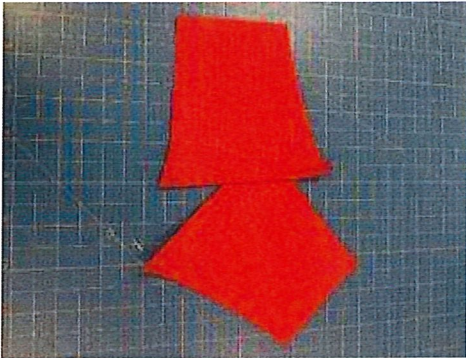


4 On *mouth 1* and *mouth 2* sew fold *side 5* over 1/4 inc and sew down..

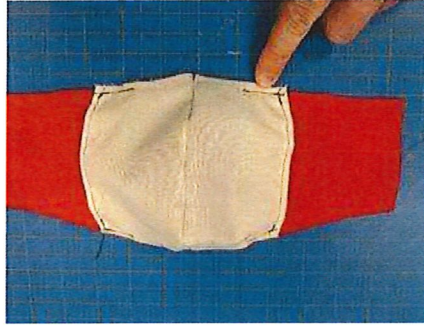
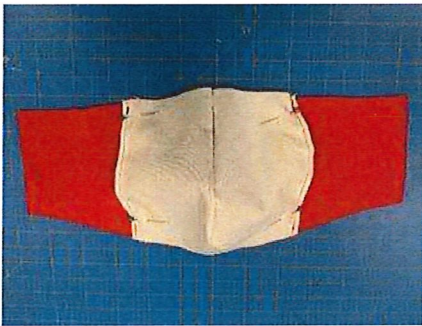


Instructions - continued

- 5 On *cheek 1* and *cheek 2* fold *side 6* over 1/4 inch and sew down.

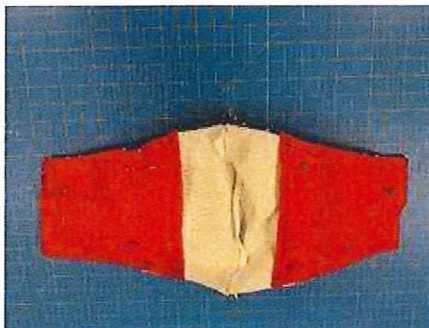
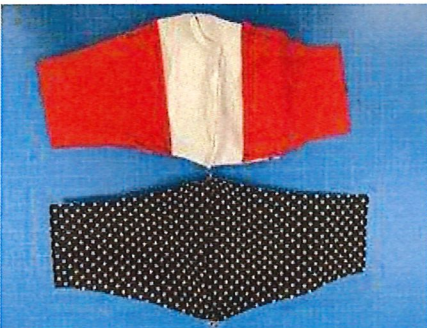


- 6 Match *cheek 1* and *mouth 1* at the dotted line (7). Sew a 1-inch tack at *side 1* and *side 2* where the two pieces overlap.

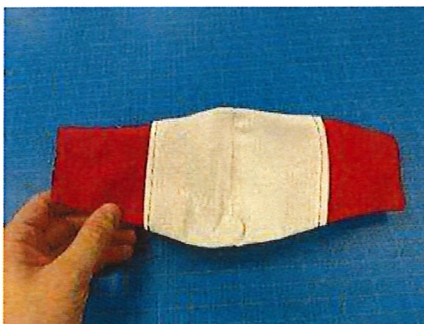
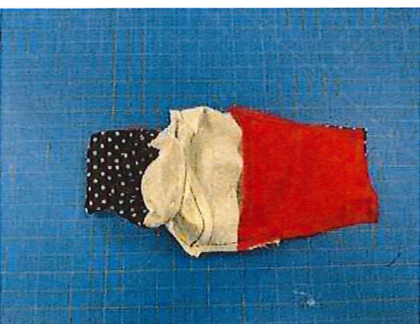


- 7 Repeat Step 6 for *cheek 2* and *mouth 2*.

- 8 With the fronts of the fabric facing each other, sew along the entire perimeter of the mask.



- 9 Use one of the slits between the mouth and the cheek to turn the mask right-side out.

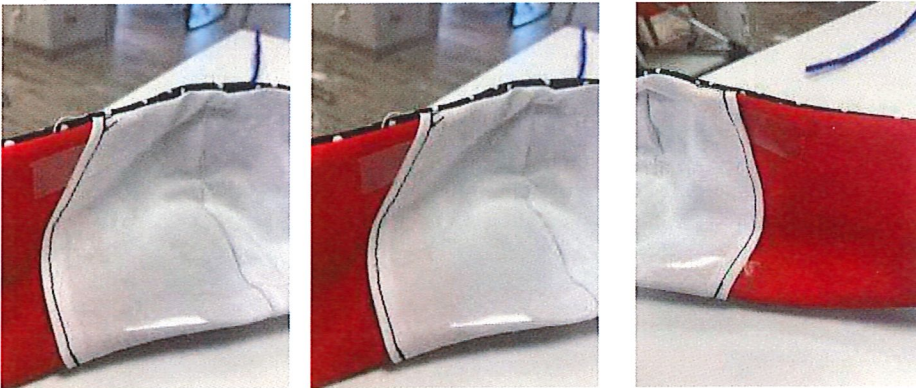


Instructions - continued

- 10 Add a hair tie to each side by folding the fabric on the end of the mask over the tie and sew down.



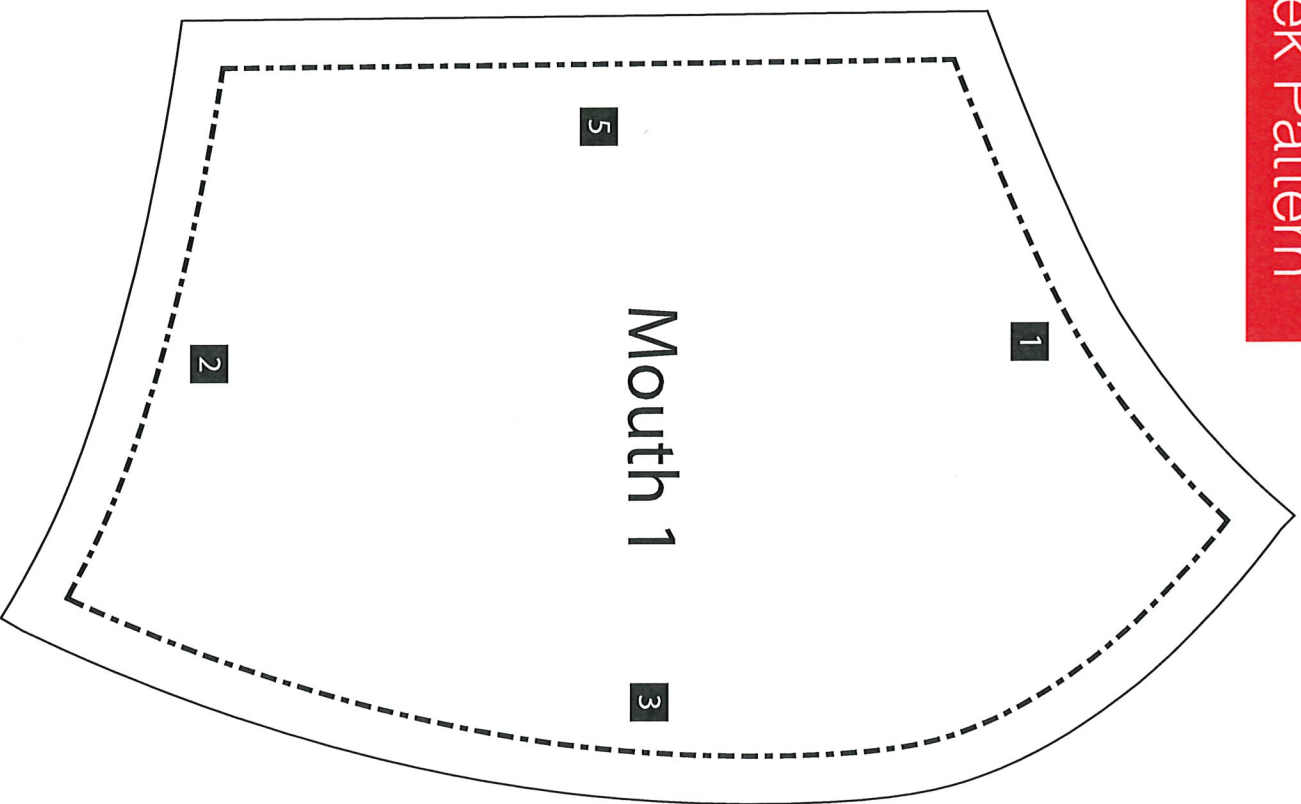
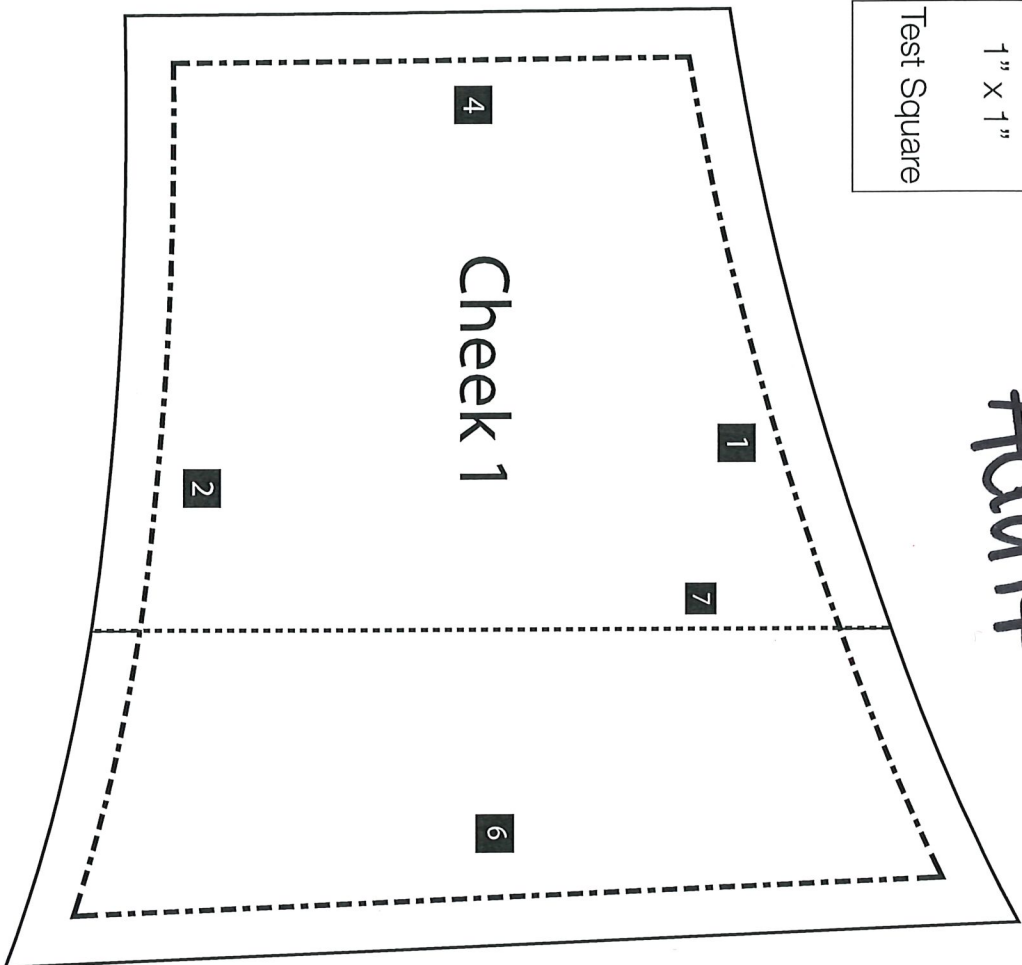
- 11 Apply double-sided skin tape around the contour of the mask to create the required seal. Skip this step if you don't have the tape



Olson Mask - Mouth & Cheek Pattern

Adult

1" X 1"
Test Square



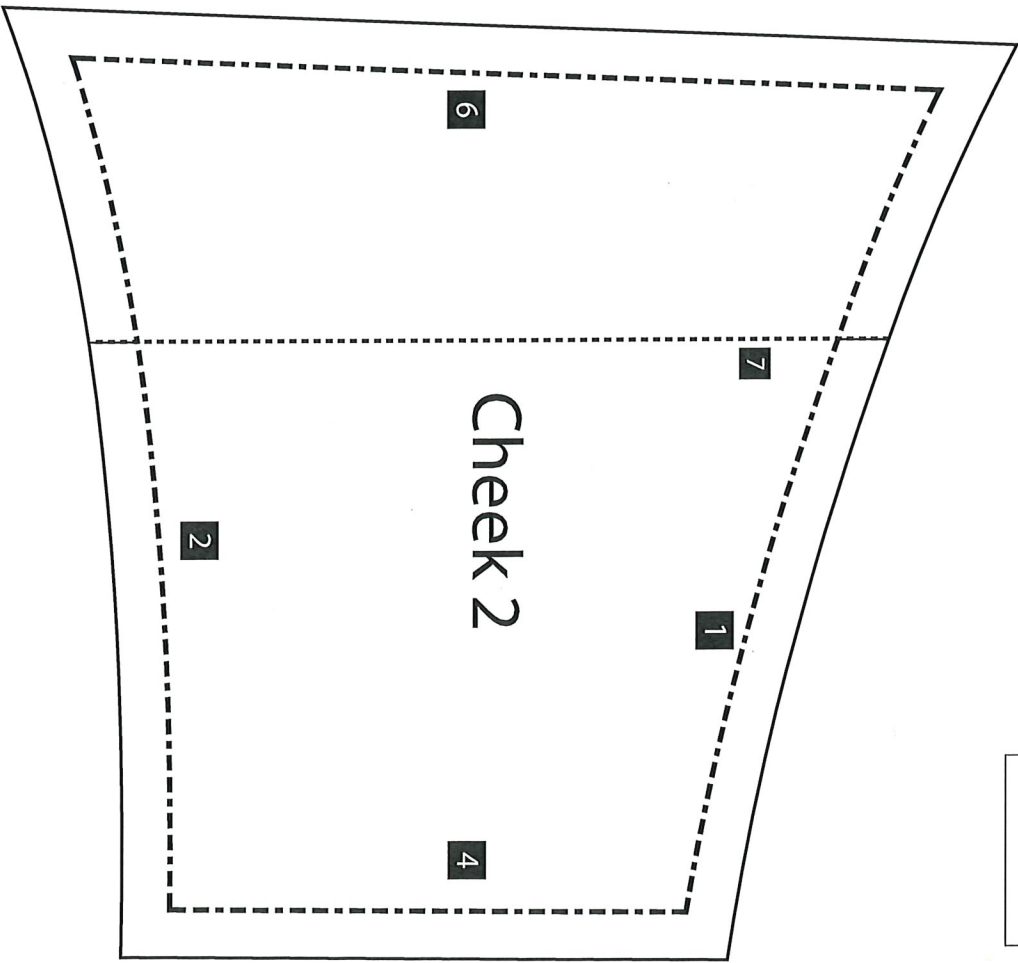
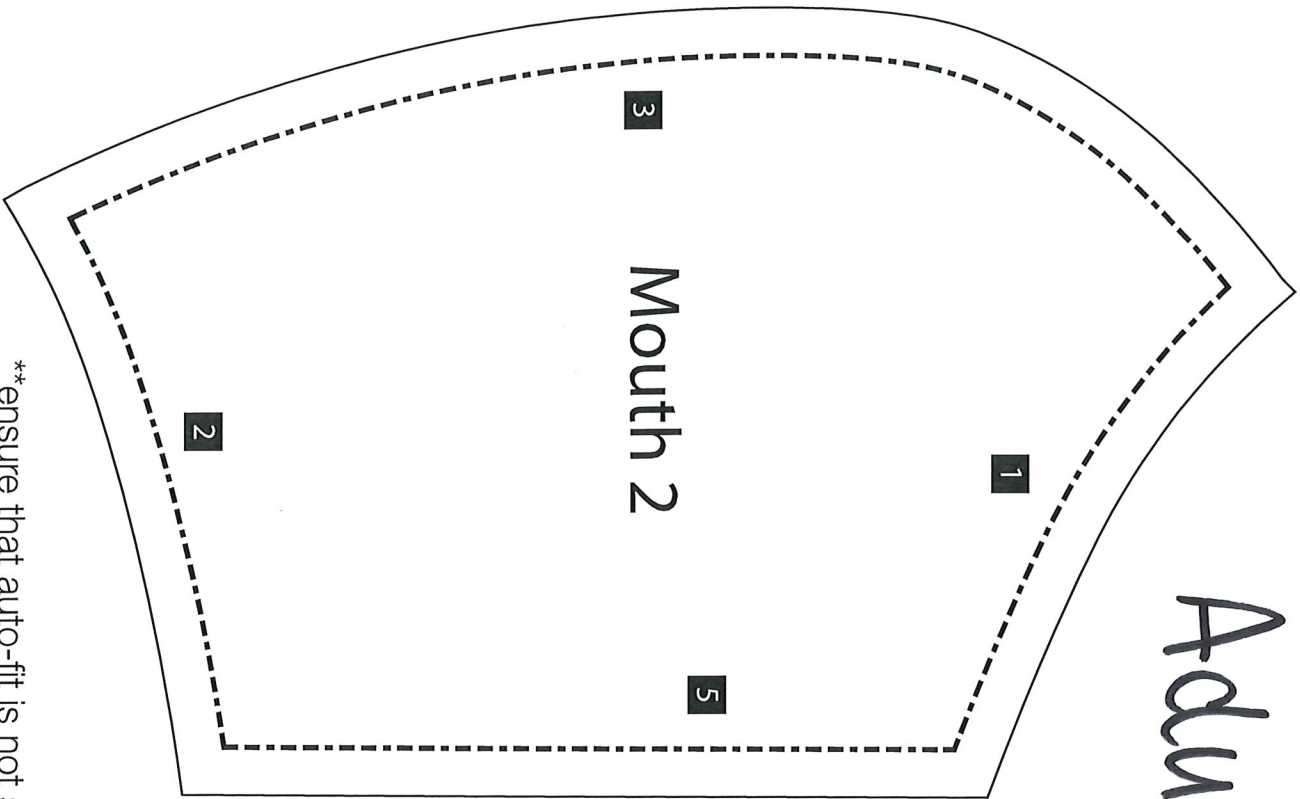
**ensure that auto-fit is not selected when printing to ensure pattern measurements are not altered



Olson Mask - Mouth & Cheek Pattern

Adult

1" x 1"
Test Square

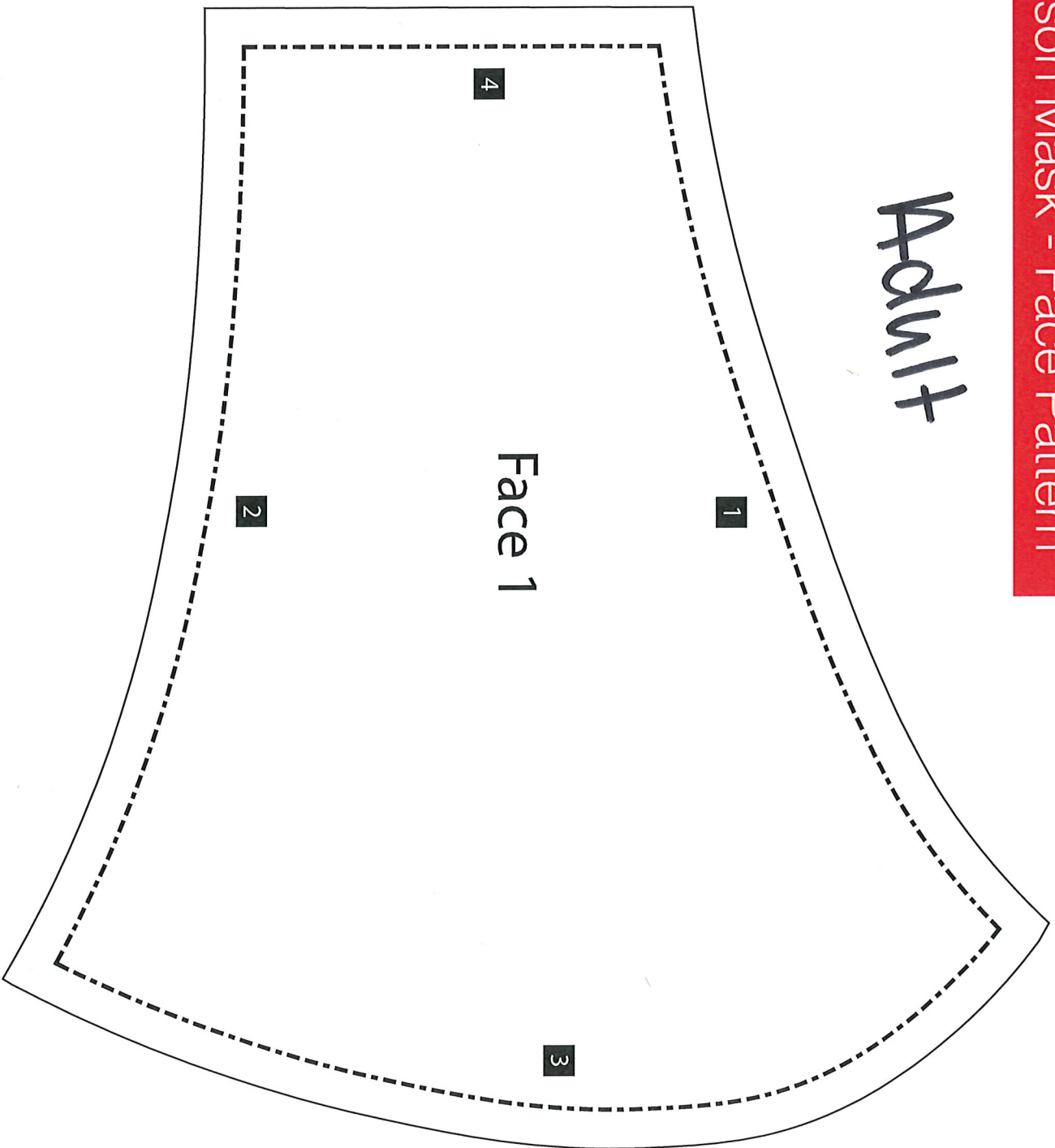


**ensure that auto-fit is not selected when printing to ensure pattern measurements are not altered



Olson Mask - Face Pattern

Adult



1" x 1"
Test Square

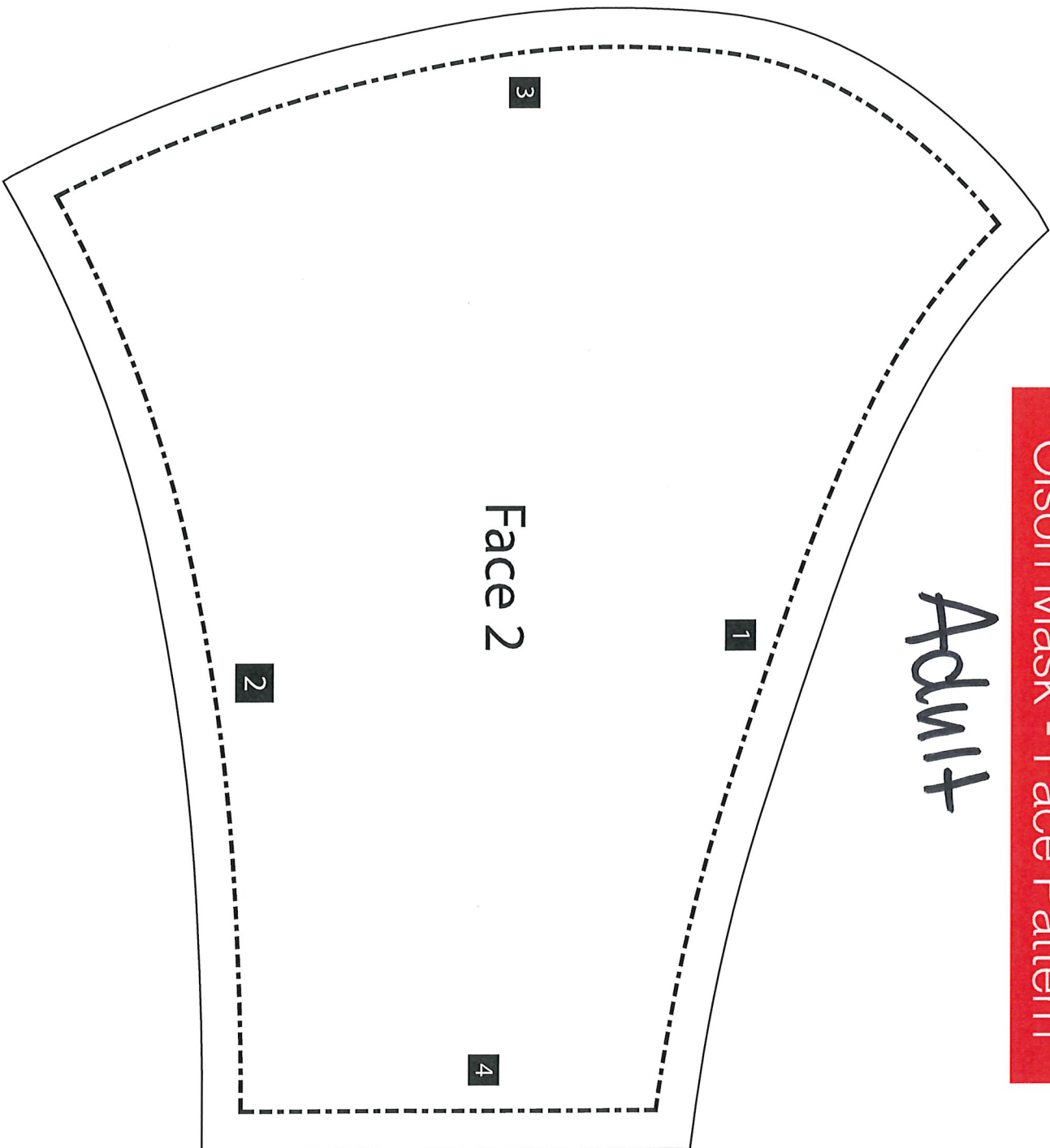
**ensure that auto-fit is not selected when printing to ensure pattern measurements are not altered



Olson Mask - Face Pattern

Admit

1" X 1"
Test Square

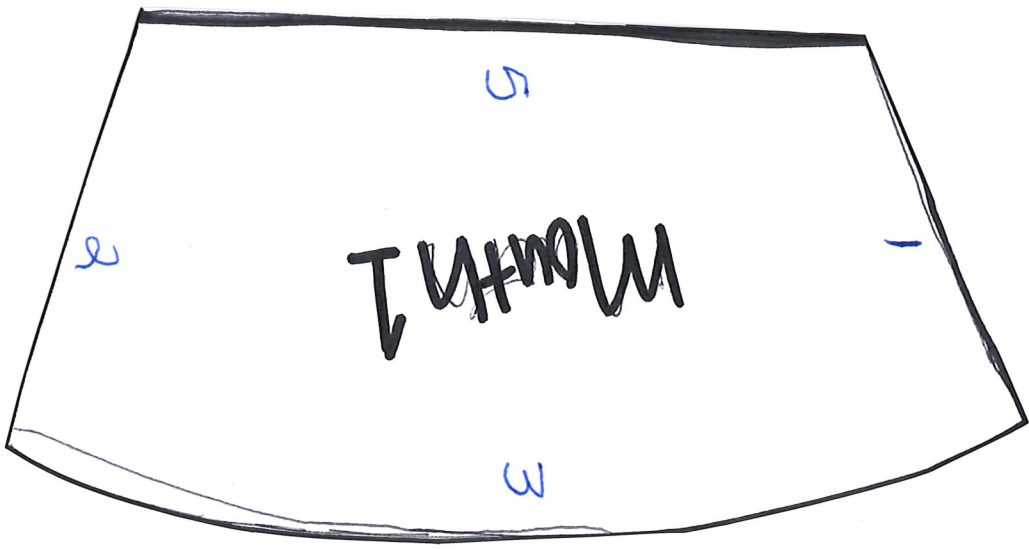
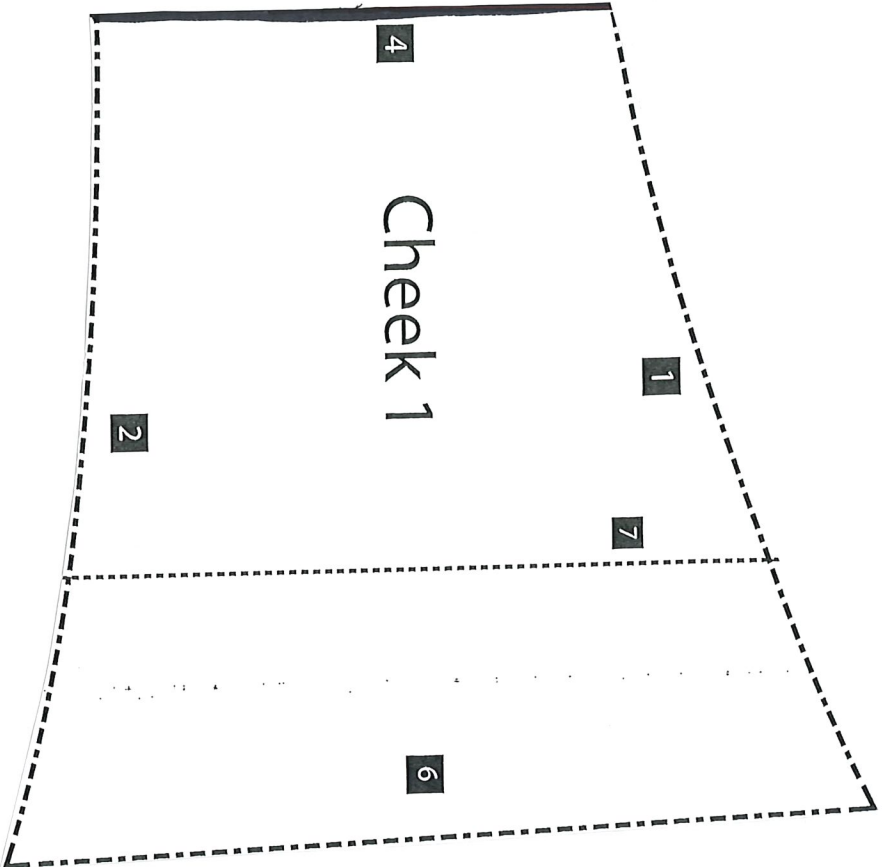


**ensure that auto-fit is not selected when printing to ensure pattern measurements are not altered



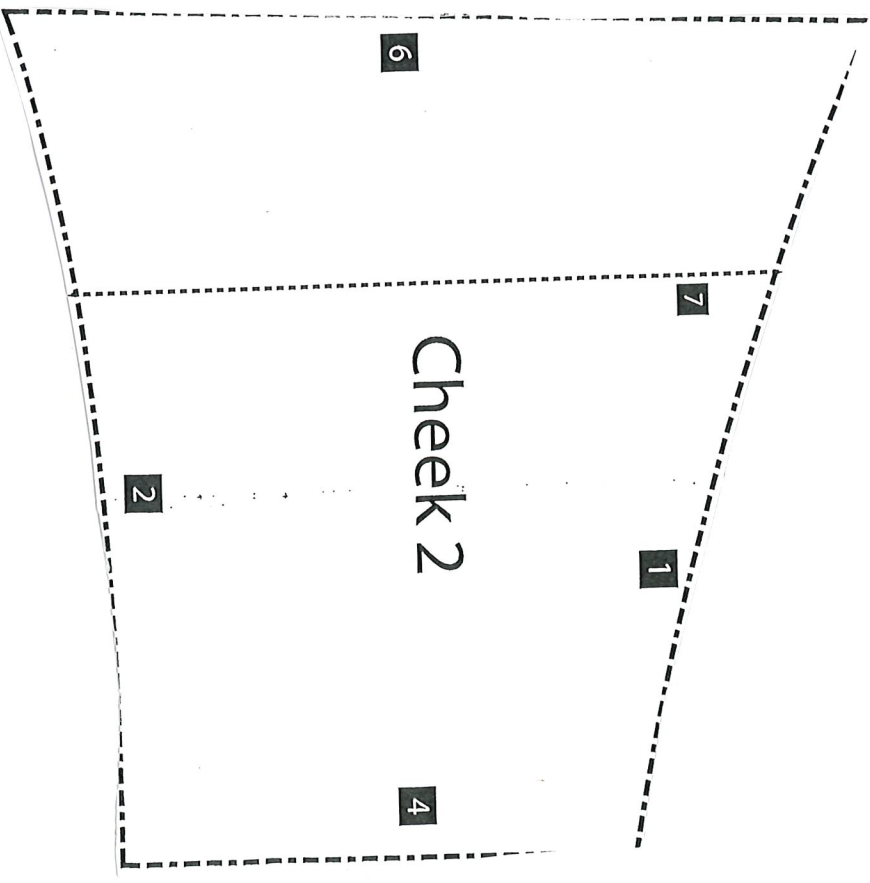
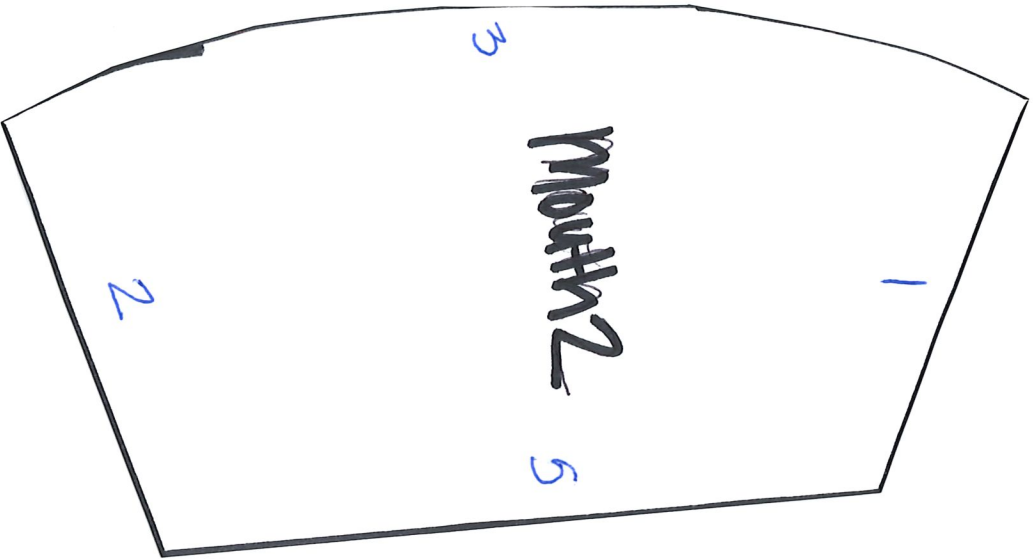
Olson Mask – Mouth and Cheek Pattern

Pediatric



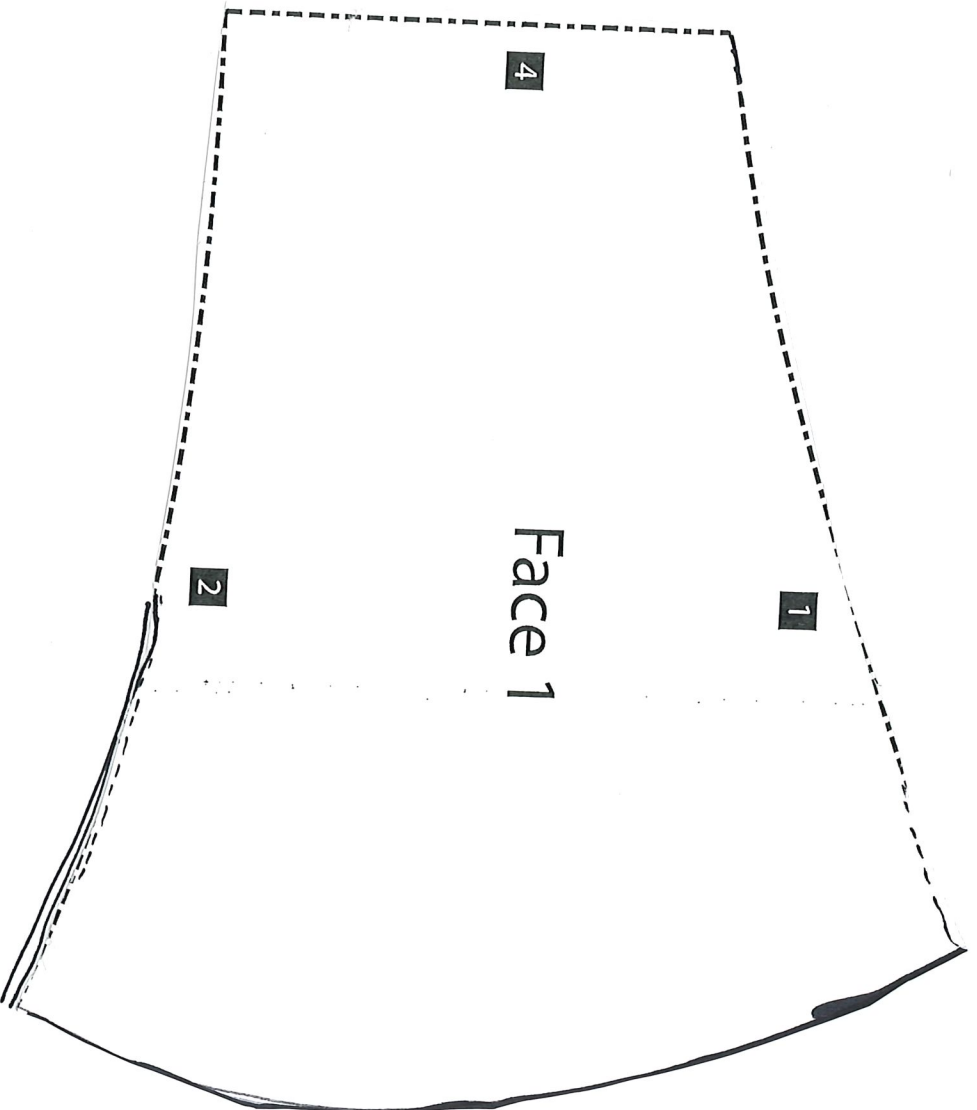
Olson Mask – Mouth and Cheek Pattern

Pediatric



Olson Mask- Face Pattern

Pediatric



Olson Mask – Face Pattern

Pediatric

